



ENERGY TECHNOLOGY

APPLICATION EXAMPLE

Sophisticated enclosure for a gateway system in the power plant industry

Throughout the world, power plants require security gateways to monitor their control and network systems. Together with one of its Japanese partner distributors, HEITEC has developed a customized enclosure solution for a Japanese customer in the power industry that incorporates complex electronics as well as meeting the customer's special corporate design requirements. The customer needed a robust enclosure with corresponding design that would allow it to be accommodated in the workplace or data centre.

The developers decided in favor of a HeiCase with an unusual configuration. The HeiCase was positioned vertically and rollers were attached to what would normally be a side panel to permit flexible transportation of the system enclosure by the customer at any time. The rollers were specially designed for this HeiCase configuration so that they could be installed on the side panel without destabilizing the overall system. Decorative elements and the rear panel were painted RAL 5012 to match the

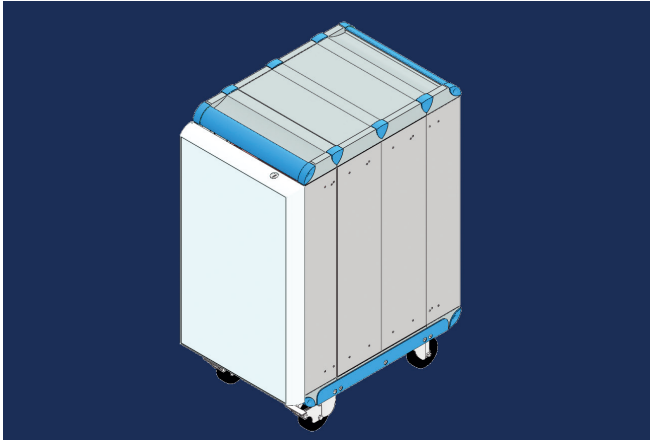
customer's corporate design. Perforated covers were used in order to provide optimal passive ventilation of the system.

The HeiCase's exterior is simultaneously timeless, substantial, and highly functional. In addition to its high-quality appearance, it also provides superior protection against environmental conditions. To protect against outside interference, the housing is also equipped with a lockable front door.

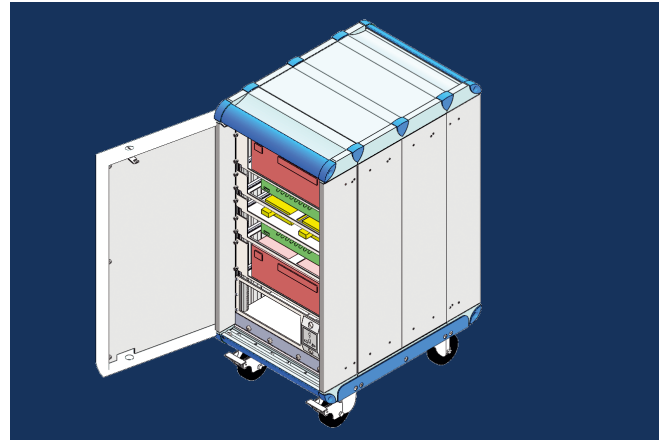
The Japanese distributor populated the HeiCase interior with a 6U, 19-inch wide HeiPac Vario. The variable sub-rack was the natural choice, since the customer's built-in components were outside the 19-inch range. The power supply and wiring were also installed on site.

By using a standard HEITEC enclosure, the customer was ensured long-term delivery capability, which in turn allows them to continue using this customized enclosure over the long term.

Sophisticated, modern chassis solution



3-D drawing of HeiCase in customer-specific configuration with closed front door



3-D drawing of HeiCase on rollers and interior configuration with open front door

Technical Summary

- › Customer-specific HeiCase system enclosure
- › D x H x W: 460 mm x 19" (plus rollers) x 6U
- › Front door with security lock
- › Decorative elements and rear panel in RAL 5012
- › Approx. 20 kg total system weight
- › Interior configuration with components from HeiPac Vario subrack system
- › 24 V power supply and wiring
- › Protection category IP52

Customer Benefits

- › System enclosure design that is specially adapted to customer requirements
- › Conformity to specific corporate design specifications
- › Superior protection against environmental conditions and unauthorised outside access
- › Robust overall system
- › Integration of project-specific components
- › Turnkey system with pre-installed power supply and complete wiring
- › Long-term delivery capability

HEITEC AG

Dr.-Otto-Leich-Str. 16
90542 Eckental, Germany

Phone: +49 9126 2934 0

Fax: +49 9126 2934 199

e-Mail: electronics@heitec.de

Web: www.heitec-electronics.com