

Helpful and extensive solutions for cable management

With its HeiCase family HEITEC offers versatile configurable instrument cases and system enclosures.

In addition to the selection of suitable components, cable management plays a major role in cabinet assembly. With its range of different components for cable management, HEITEC is expanding its portfolio of accessories for the HeiCase housing family.

Cable entry panels in 1U and 2U are available to guide the cabling from the front to the inside of the cabinet. There is also a selection of cable trays in 1U and 2U - also with optional feed-through panel. A cable tie strip and cable management panel round off the range.

Most components are powder-coated (color: RAL 7035) and all are characterized by high stability, load capacity and quality. They are fastened in the cabinet using the fastening material supplied.

As all accessory components correspond to the dimensions of the 19-inch standard, these are not limited to the HeiCase family, but can be used for any standard 19-inch cabinet without any problems.

Accessories for HeiCase and 19" cabinets

Cable Management

19" Cable entry plate with edge protection, 1U



Article	Material	Model
9923.184	1,5 mm sheet steel	powder-coated RAL 7035

Supply includes: assembly parts

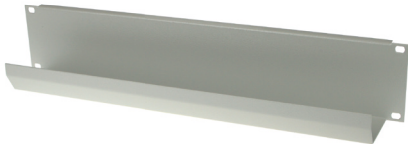
19" Cable entry plate with tub and edge protection, 1U



Article	Material	Model
9923.185	1,5 mm sheet steel	powder-coated RAL 7035

Supply includes: assembly parts

19" Cable tub, 2U



Article	Material	Model
9923.186	1,5 mm sheet steel	powder-coated RAL 7035

Supply includes: assembly parts

19" Cable entry plate with brush cover and edge protection, 2U



Article	Material	Model
9923.187	1,5 mm sheet steel	powder-coated RAL 7035

Size cable port: 50 mm x 410 mm
Supply includes: assembly parts

19" Cable tie bar - or strain relief of cables (length 482,6 mm)



Article	Material	Model
9923.188	1,5 mm sheet steel	galvanized

Supply includes: assembly parts

19" Cable management panel, 1U



Article	Material	Model
9923.189	1,5 mm sheet steel	dotted
9923.190	1,5 mm sheet steel	simple

Surface: powder-coated RAL 7035
Supply includes: assembly parts

HEITEC AG

Dr.-Otto-Leich-Str. 16
90542 Eckental, Germany

Phone: +49 9126 2934 0

Fax: +49 9126 2934 199

Email: electronics@heitec.de

Internet: www.heitec-electronics.com