

Flexible subrack with mounted DIN Rail

The HeiPac DIN Rail ECO subrack was especially developed to enable the mounting of DIN Rail devices in control cabinets in the 19-inch range at minimum cost.

Use in industrial applications is subject to a wide range of conditions. This results in fundamental demands on chassis technology, such as resistance to environmental influences like humidity, shock and vibration, and high mechanical loads, in order to guarantee the reliability of the overall application.

To provide this guarantee, the HeiPac DIN Rail ECO has been made of pre-galvanized 2 mm steel plate. Standard EN 50022 also prescribes a minimum depth of 70 mm for chassis with the option to mount DIN Rail components. To give the user more flexibility with the choice of appro-

priate DIN rail modules, a subrack with a chassis depth of 150 mm and a height of 3 U has been created. The TS35/7.5 DIN rail that has been used also allows the use of market-standard modules.

The HeiPac DIN Rail ECO is available in a powder-coated version in RAL 7035 to maintain a uniform appearance when used in typical control cabinets.

It can also be adapted for individual applications, and can be fitted with customer-specific DIN rails, e.g. TS35/15, on request. The HeiPac DIN Rail ECO is thus available for many different applications, quickly and at low cost.

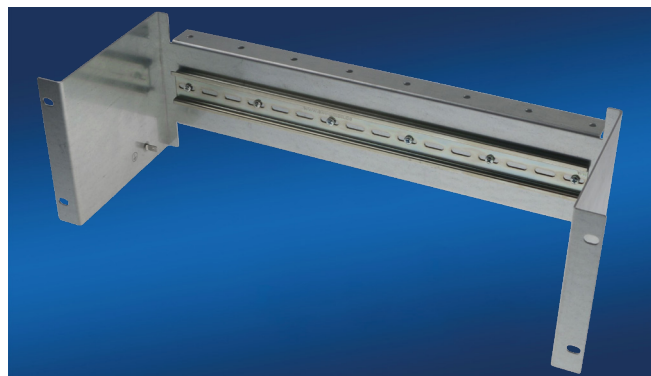
HeiPac DIN Rail ECO

Subracks with DIN rails

DIN rail subrack



Subrack HeiPac DIN Rail ECO with powder coated surface (RAL 7035)



Subrack HeiPac DIN Rail ECO as a pre-galvanized variant

Article	Description	Height	Width	Side panel depth	Surface
9923133	HeiPac DIN Rail ECO	3 U	84 HP	150 mm	pre-galvanized
9923132	HeiPac DIN Rail ECO	3 U	84 HP	150 mm	powder-coated, RAL 7035

Technical Summary

HeiPac DIN Rail ECO:

- › Pre-galvanized steel plate
- › Also available with powder-coated surface
- › Highly stable thanks to structural details like back cable holder (plastic cable holder 9923.460 as accessory)
- › Fitted with DIN rail TS35/7.5; width 400 mm
- › Fitted with earthing lead at left and right
- › Delivery fully assembled

Customer Benefits

- › Ready to use immediately (plug-and-play)
- › High stability
- › Widely used DIN rail fitted as standard
- › Low-cost solution
- › Ideal for applications in an industrial environment

HEITEC AG

Dr.-Otto-Leich-Str. 16
90542 Eckental, Germany

Phone: +49 9126 2934 0

E-mail: electronics@heitec.de

Web: <https://elektronik.heitec.de/en>