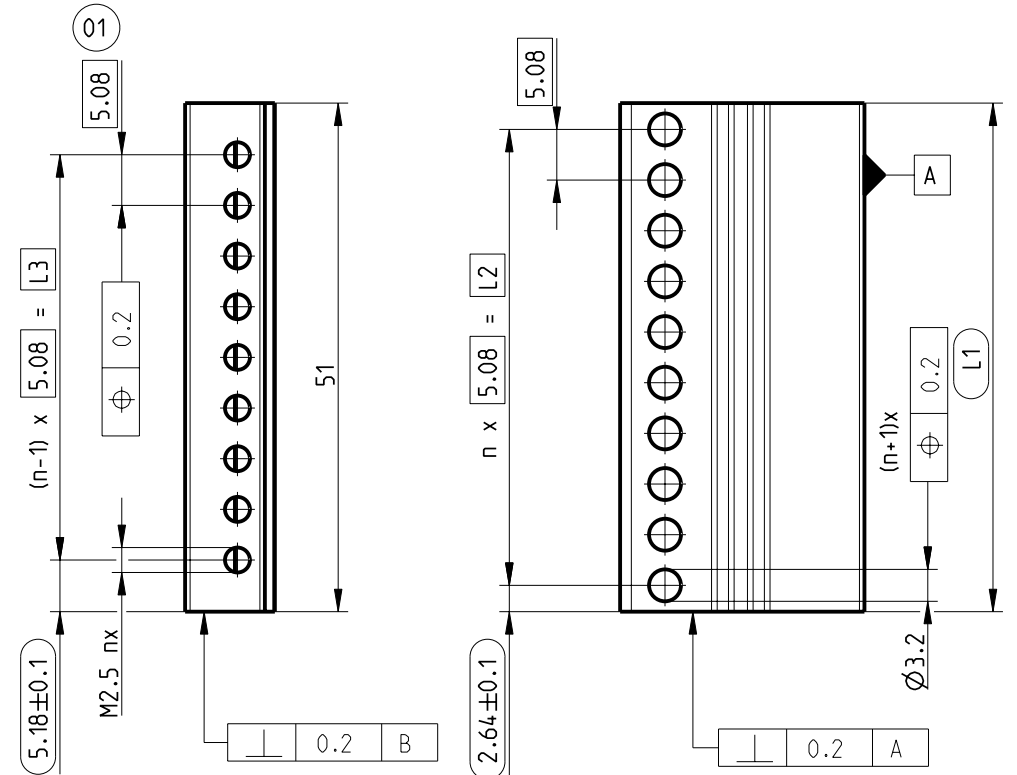
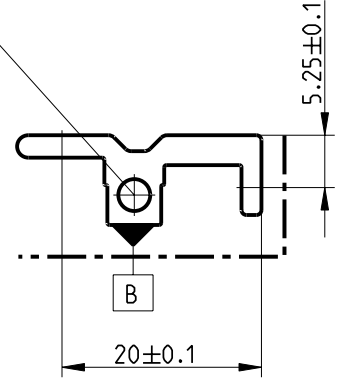


Z-Nr. Draw.	L1+0.3	L2	L3	n	Z-Nr. Draw.	L1+0.3	L2	L3	n	Z-Nr. Draw.	L1+0.3	L2	L3	n
_001	10.36	5.08	0.00	1	_057	294.84	289.56	284.48	57	_113	579.32	574.04	568.96	113
_002	15.44	10.16	5.08	2	_058	299.92	294.64	289.56	58	_114	584.40	579.12	574.04	114
_003	20.52	15.24	10.16	3	_059	305.00	299.72	294.64	59	_115	589.48	584.20	579.12	115
_004	25.60	20.32	15.24	4	_060	310.08	304.80	299.72	60	_116	594.56	589.28	584.20	116
_005	30.68	25.40	20.32	5	_061	315.16	309.88	304.80	61	_117	599.64	594.36	589.28	117
_006	35.76	30.48	25.40	6	_062	320.24	314.96	309.88	62	_118	604.72	599.44	594.36	118
_007	40.84	35.56	30.48	7	_063	325.32	320.04	314.96	63	_119	609.80	604.52	599.44	119
_008	45.92	40.64	35.56	8	_064	330.40	325.12	320.04	64	_120	614.88	609.60	604.52	120
_009	51.00	45.72	40.64	9	_065	335.48	330.20	325.12	65	_121	619.96	614.68	609.60	121
_010	56.08	50.80	45.72	10	_066	340.56	335.28	330.20	66	_122	625.04	619.76	614.68	122
_011	61.16	55.88	50.80	11	_067	345.64	340.36	335.28	67	_123	630.12	624.84	619.76	123
_012	66.24	60.96	55.88	12	_068	350.72	345.44	340.36	68	_124	635.20	629.92	624.84	124
_013	71.32	66.04	60.96	13	_069	355.80	350.52	345.44	69	_125	640.28	635.00	629.92	125
_014	76.40	71.12	66.04	14	_070	360.88	355.60	350.52	70	_126	645.36	640.08	635.00	126
_015	81.48	76.20	71.12	15	_071	365.96	360.68	355.60	71	_127	650.44	645.16	640.08	127
_016	86.56	81.28	76.20	16	_072	371.04	365.76	360.68	72	_128	655.52	650.24	645.16	128
_017	91.64	86.36	81.28	17	_073	376.12	370.84	365.76	73	_129	660.60	655.32	650.24	129
_018	96.72	91.44	86.36	18	_074	381.20	375.92	370.84	74	_130	665.68	660.40	655.32	130
_019	101.80	96.52	91.44	19	_075	386.28	381.00	375.92	75	_131	670.76	665.48	660.40	131
_020	106.88	101.60	96.52	20	_076	391.36	386.08	381.00	76	_132	675.84	670.56	665.48	132
_021	111.96	106.68	101.60	21	_077	396.44	391.16	386.08	77	_133	680.92	675.64	670.56	133
_022	117.04	111.76	106.68	22	_078	401.52	396.24	391.16	78	_134	686.00	680.72	675.64	134
_023	122.12	116.84	111.76	23	_079	406.60	401.32	396.24	79	_135	691.08	685.80	680.72	135
_024	127.20	121.92	116.84	24	_080	411.68	406.40	401.32	80	_136	696.16	690.88	685.80	136
_025	132.28	127.00	121.92	25	_081	416.76	411.48	406.40	81	_137	701.24	695.96	690.88	137
_026	137.36	132.08	127.00	26	_082	421.84	416.56	411.48	82	_138	706.32	701.04	695.96	138
_027	142.44	137.16	132.08	27	_083	426.92	421.64	416.56	83	_139	711.40	706.12	701.04	139
_028	147.52	142.24	137.16	28	_084	432.00	426.72	421.64	84	_140	716.48	711.20	706.12	140
_029	152.60	147.32	142.24	29	_085	437.08	431.80	426.72	85	_141	721.56	716.28	711.20	141
_030	157.68	152.40	147.32	30	_086	442.16	436.88	431.80	86	_142	726.64	721.36	716.28	142
_031	162.76	157.48	152.40	31	_087	447.24	441.96	436.88	87	_143	731.72	726.44	721.36	143
_032	167.84	162.56	157.48	32	_088	452.32	447.04	441.96	88	_144	736.80	731.52	726.44	144
_033	172.92	167.64	162.56	33	_089	457.40	452.12	447.04	89	_145	741.88	736.60	731.52	145
_034	178.00	172.72	167.64	34	_090	462.48	457.20	452.12	90	_146	746.96	741.68	736.60	146
_035	183.08	177.80	172.72	35	_091	467.56	462.28	457.20	91	_147	752.04	746.76	741.68	147
_036	188.16	182.88	177.80	36	_092	472.64	467.36	462.28	92	_148	757.12	751.84	746.76	148
_037	193.24	187.96	182.88	37	_093	477.72	472.44	467.36	93	_149	762.20	756.92	751.84	149
_038	198.32	193.04	187.96	38	_094	482.80	477.52	472.44	94	_150	767.28	762.00	756.92	150
_039	203.40	198.12	193.04	39	_095	487.88	482.60	477.52	95	_151	772.36	767.08	762.00	151
_040	208.48	203.20	198.12	40	_096	492.96	487.68	482.60	96	_152	777.44	772.16	767.08	152
_041	213.56	208.28	203.20	41	_097	498.04	492.76	487.68	97	_153	782.52	777.24	772.16	153
_042	218.64	213.36	208.28	42	_098	503.12	497.84	492.76	98	_154	787.60	782.32	777.24	154
_043	223.72	218.44	213.36	43	_099	508.20	502.92	497.84	99	_155	792.68	787.40	782.32	155
_044	228.80	223.52	218.44	44	_100	513.28	508.00	502.92	100	_156	797.76	792.48	787.40	156
_045	233.88	228.60	223.52	45	_101	518.36	513.08	508.00	101	_157	802.84	797.56	792.48	157
_046	238.96	233.68	228.60	46	_102	523.44	518.16	513.08	102	_158	807.92	802.64	797.56	158
_047	244.04	238.76	233.68	47	_103	528.52	523.24	518.16	103	_159	813.00	807.72	802.64	159
_048	249.12	243.84	238.76	48	_104	533.60	528.32	523.24	104	_160	818.08	812.80	807.72	160
_049	254.20	248.92	243.84	49	_105	538.68	533.40	528.32	105	_161	823.16	817.88	812.80	161
_050	259.28	254.00	248.92	50	_106	543.76	538.48	533.40	106	_162	828.24	822.96	817.88	162
_051	264.36	259.08	254.00	51	_107	548.84	543.56	538.48	107	_163	833.32	828.04	822.96	163
_052	269.44	264.16	259.08	52	_108	553.92	548.64	543.56	108	_164	838.40	833.12	828.04	164
_053	274.52	269.24	264.16	53	_109	559.00	553.72	548.64	109	_165	843.48	838.20	833.12	165
_054	279.60	274.32	269.24	54	_110	564.08	558.80	553.72	110	_166	848.56	843.28	838.20	166
_055	284.68	279.40	274.32	55	_111	569.16	563.88	558.80	111	_167	853.64	848.36	843.28	167
_056	289.76	284.48	279.40	56	_112	574.24	568.96	563.88	112	_168	858.72	853.44	848.36	168

An den beiden Stirnseiten
Senkung 1,5x90° mit Gewinde M4x18
on both front faces countersink 1.5x90°
with thread M4x18



1) DIN EN12487 AL/A/T2
(matt gebeizt, farblos chromatiert)
(matt pickled, colorless chromated)

--- Sichtfläche frei von Beschädigungen
(Kratzer, Riefen, Druckstellen, usw.)
Surface free of damage
(scratch, marks etc.)

Werkstückkanten ISO 13715 $+0.03$
Part edges ISO 13715 -0.2

CAD

Dieses Bauteil unterliegt den Reglementierungen der RoHS Richtlinie
und deren Umsetzung im ElektroG.

This component is subject to the RoHS directive and its applications
within the Electrical and Electronic Equipment Act (ElektroG).

Toleranzen tolerances DIN ISO 2768 mK		Oberfläche surface 1)		Maßstab/scale 2:1		Gew. 240g/m	
Date 23.03.07		Name Küster		Profil: P01711**RV23			
Rev. 01		Date 16.11.07		Prf. Schaffer		Schiene/Rail 9mm Mitte o/u H=9mm T=24.5mm Centered t/b H=9mm D=24.5mm	
Rev. no.		Date		Name		P0171401RV22_000-168	
RES		RITTAL RES GmbH & Co.KG		1 Blätter sheets		1 Blatt sheet	

Weitergabe sowie Veredelung dieses Umrisses, Ver-
 wertung und Mitteilung ihres Inhalts nicht gestattet, soweit
 nicht ausdrücklich zugelassen. Zuwiderhandlungen verze-
 hend nicht. Besondere über den Fall der Patenterteilung oder -
 Eintragung.
 The reproduction, distribution and utilization of this document as well as
 the communication of its contents to others without explicit authorization
 is prohibited. All rights reserved in the event of the grant of a patent, utility model, or design.