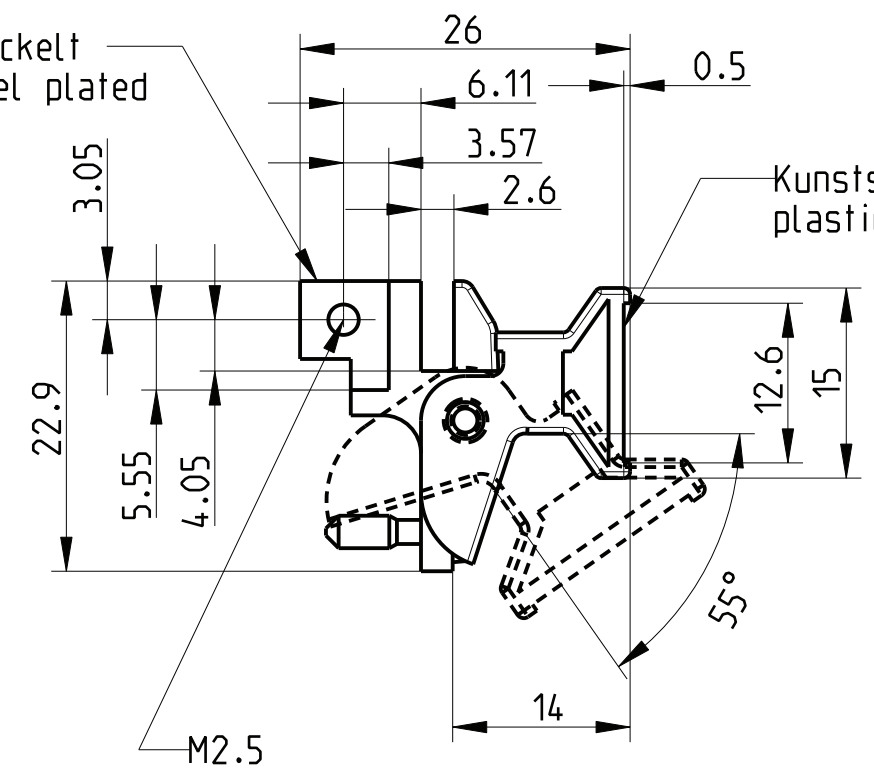
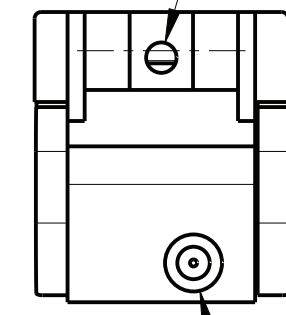


The reproduction, distribution and utilization of this document as well as the communication of its contents to others without explicit authorization is prohibited. Offenders will be held liable for the payment of damages. All rights reserved in the event of the grant of a patent, utility model or design.

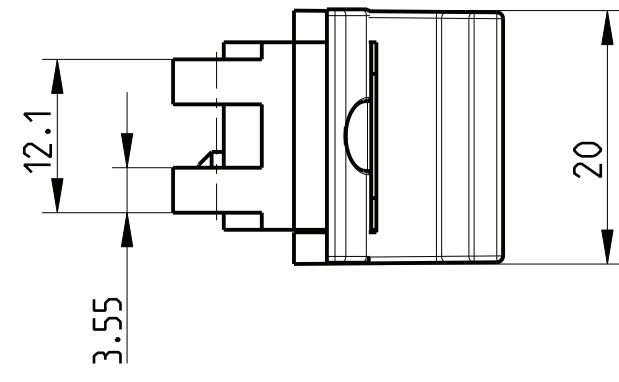
Zinkdruckguß vernickelt
Zinc die cast nickel plated



M2.5
für Befestigung der Frontplatte
to fasten the frontpanel



Halsschraube/ M2.5x10
Captive screw
für Befestigung der Griffe
mit Frontplatten im BGT
to fasten the handle
and frontpanel in the subrack



Art.Nr.	Zeichnungs Nr.	Farbe
Part No.	Drawing No.	Color
1) 3685587	226 203.7300.13	grau / grey
1) 3685589	226 203.7300.12	schwarz / black

1) Standardprodukt: alle weiteren Typen auf Anfrage
Standard product: all other types on request

2) Technische Aenderungen vorbehalten
Subject to change without notice

Dieses Bauteil unterliegt den Reglementierungen der RoHS Richtlinie und deren Umsetzung im ElektroG.

This component is subject to the RoHS directive and its applications within the Electrical and Electronic Equipment Act (ElektroG).

	Toleranzen tolerances		Oberfläche surface	Maßstab/scale	

			Date	26.01.96	Aushebegriff Typ I Extractor handle type I
			Name	Kör.	
			Prf.	Schaff.	
a	HT0120	27.05.13	Kör.	HEITEC	1 Blatt sheets
Rev.	Rev no.	Date	Name		Blatt sheet
				226 203.7300.00-99 MB a	
				1	

CAD