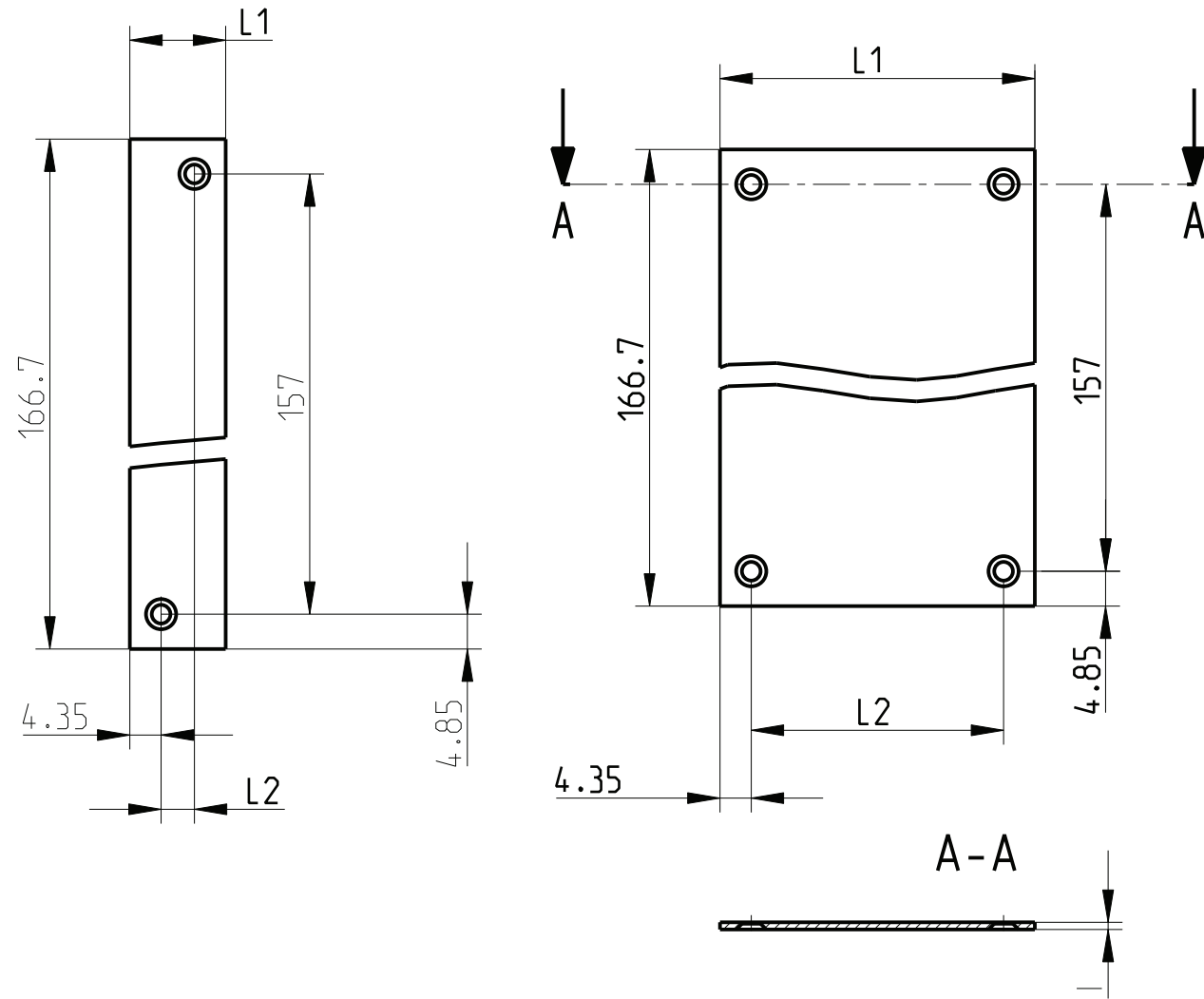


The reproduction, distribution and utilization of this document as well as the communication of its contents to others without explicit authorization is prohibited. Offenders will be held liable for the payment of damages. All rights reserved in the event of a patent, utility model or design.

Variante A  
gezeichnete Ausführung Z.-Nr.08  
Drawn version dwg No 08

Variante B  
gezeichnete Ausführung Z.-Nr.14  
Drawn version dwg No 14



- 1) entfettet/degreased
- 2) Standardprodukt: alle weiteren Typen auf Anfrage  
Standard product: all other types on request
- 3) Technische Aenderungen vorbehalten  
Subject to change without notice

Dieses Bauteil unterliegt den Reglementierungen der RoHS Richtlinie und deren Umsetzung im ElektroG.

This component is subject to the RoHS directive and its applications within the Electrical and Electronic Equipment Act (ElektroG).

Art.Nr.	Zeichnungs Nr.				Zeichnungs Nr.			
Part No.	Drawing No	Var.	L1	L2	Drawing No	Var.	L1	L2
2) 3687555	226 215.0208.08	A	13,34	4,64	226 215.0208.50	B	226,70	218,00
	226 215.0208.09	B	18,42	9,72	226 215.0208.51	B	231,78	223,08
2) 3685689	226 215.0208.10	B	23,50	14,80	226 215.0208.52	B	236,86	228,16
	226 215.0208.11	B	28,58	19,88	226 215.0208.53	B	241,94	233,24
2) 3685690	226 215.0208.12	B	33,66	24,96	226 215.0208.54	B	247,02	238,32
	226 215.0208.13	B	38,74	30,04	226 215.0208.55	B	252,10	243,40
2) 3685691	226 215.0208.14	B	43,82	35,12	226 215.0208.56	B	257,18	248,48
	226 215.0208.15	B	48,90	40,20	226 215.0208.57	B	262,26	253,56
	226 215.0208.16	B	53,98	45,28	226 215.0208.58	B	267,34	258,64
	226 215.0208.17	B	59,06	50,36	226 215.0208.59	B	272,42	263,72
	226 215.0208.18	B	64,14	55,44	226 215.0208.60	B	277,50	268,80
	226 215.0208.19	B	69,22	60,52	226 215.0208.61	B	282,58	273,88
	226 215.0208.20	B	74,30	65,60	226 215.0208.62	B	287,66	278,96
	226 215.0208.21	B	79,38	70,68	226 215.0208.63	B	292,74	284,04
	226 215.0208.22	B	84,46	75,76	226 215.0208.64	B	297,82	289,12
	226 215.0208.23	B	89,54	80,84	226 215.0208.65	B	302,90	294,20
2) 3685692	226 215.0208.24	B	94,62	85,92	226 215.0208.66	B	307,98	299,28
	226 215.0208.25	B	99,70	91,00	226 215.0208.67	B	313,06	304,36
	226 215.0208.26	B	104,78	96,08	226 215.0208.68	B	318,14	309,44
	226 215.0208.27	B	109,86	101,16	226 215.0208.69	B	323,22	314,52
	226 215.0208.28	B	114,94	106,24	226 215.0208.70	B	328,30	319,60
	226 215.0208.29	B	120,02	111,32	226 215.0208.71	B	333,38	324,68
	226 215.0208.30	B	125,10	116,40	226 215.0208.72	B	338,46	329,76
	226 215.0208.31	B	130,18	121,48	226 215.0208.73	B	343,54	334,84
	226 215.0208.32	B	135,26	126,56	226 215.0208.74	B	348,62	339,92
	226 215.0208.33	B	140,34	131,64	226 215.0208.75	B	353,70	345,00
2) 3685693	226 215.0208.34	B	145,42	136,72	226 215.0208.76	B	358,78	350,08
	226 215.0208.35	B	150,50	141,80	226 215.0208.77	B	363,86	355,16
	226 215.0208.36	B	155,58	146,88	226 215.0208.78	B	368,94	360,24
	226 215.0208.37	B	160,66	151,96	226 215.0208.79	B	374,02	365,32
	226 215.0208.38	B	165,74	157,04	226 215.0208.80	B	379,10	370,40
	226 215.0208.39	B	170,82	162,12	226 215.0208.81	B	384,18	375,48
	226 215.0208.40	B	175,90	167,20	226 215.0208.82	B	389,26	380,56
	226 215.0208.41	B	180,98	172,28	226 215.0208.83	B	394,34	385,64
	226 215.0208.42	B	186,06	177,36	226 215.0208.84	B	399,42	390,72
	226 215.0208.43	B	191,14	182,44				
226 215.0208.44	B	196,22	187,52					
226 215.0208.45	B	201,30	192,60					
226 215.0208.46	B	206,38	197,68					
226 215.0208.47	B	211,46	202,76					
226 215.0208.48	B	216,54	207,84					
226 215.0208.49	B	221,62	212,92					

	Toleranzen tolerances		Oberfläche surface 1)		Maßstab/scale 1:1; 5:1		1 Blätter sheets
					Aluminium		
			Date	10.08.95	Deckblech geschlossen Cover plate closed für LP 160 / for PCB 160 mm für Steckblock / for Box type plug-in		Blatt sheet 1
			Name	Kon./Fr ö			
b	HT0120	27.05.13	Kör.	Prf.	Schaffer		
a	R269	25.04.05	Vish				
Rev.	Rev no.	Date	Name	<b>HEITEC</b>			
					226 215.0208.08-84 MB b		

CAD