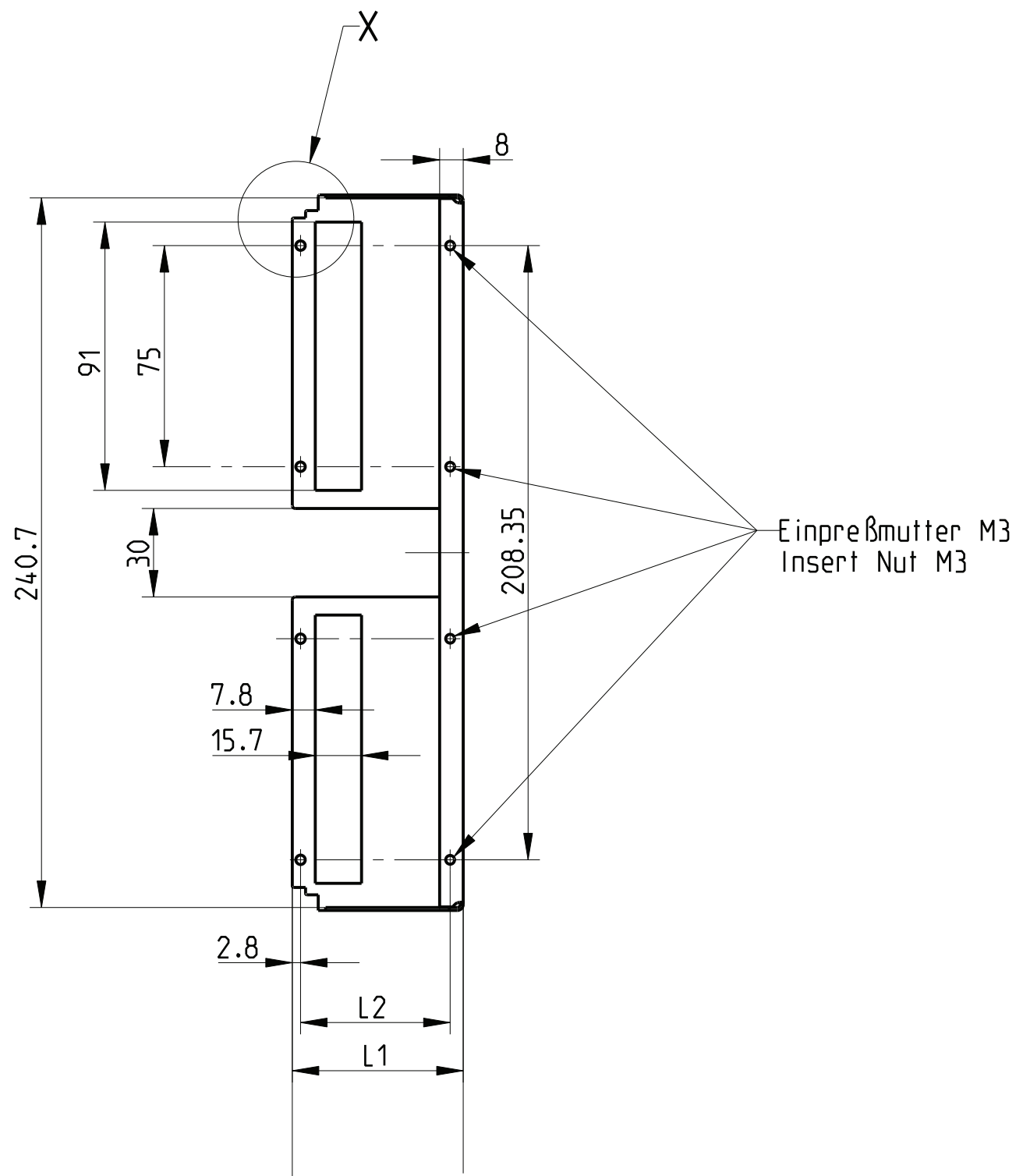
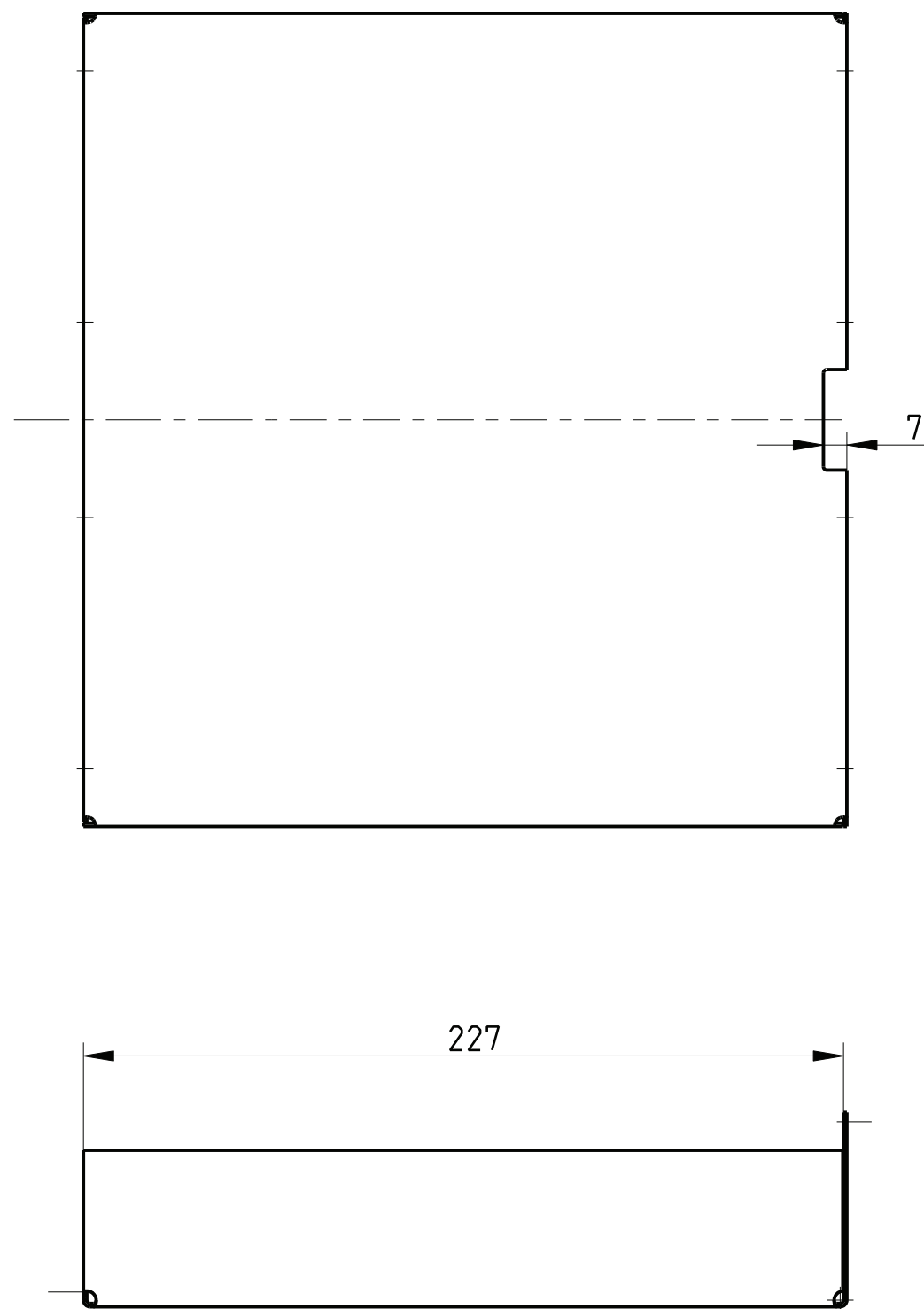
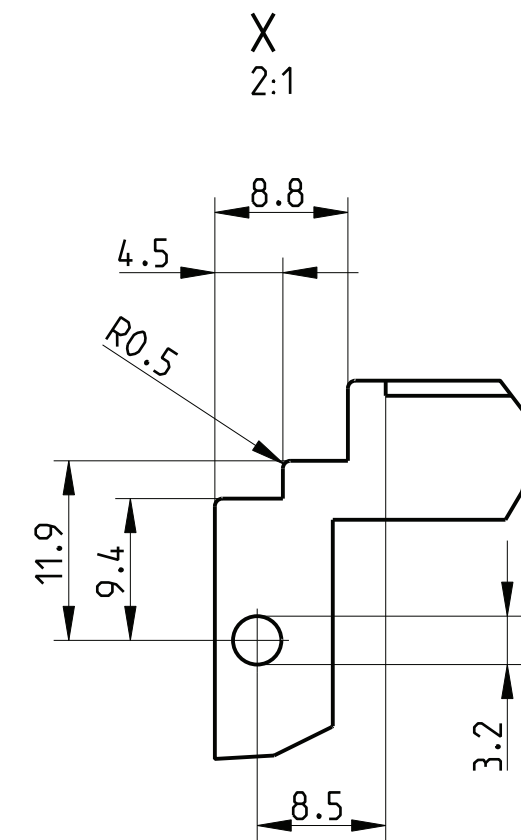


gezeichnete Ausführung Z.-Nr.:12  
 Drawn version dwg No 12



Einpreßmutter M3  
 Insert Nut M3



The reproduction, distribution and utilization of this document as well as the communication of its contents to others without explicit authorization is prohibited. All rights reserved in the event of a patent, utility model or design.

- 1) matt gebeizt, farblos chromatiert  
clear chromated
- 2) Standardprodukt: alle weiteren Typen auf Anfrage  
Standard product: all other types on request
- 3) Technische Aenderungen vorbehalten  
Subject to change without notice
- 4) fuer 220 mm Leiterplattentiefe / Frontplattenbefestigung  
for 220mm pcb depth /front plate fastening

Dieses Bauteil unterliegt den Reglementierungen der RoHS Richtlinie und deren Umsetzung im ElektroG.

This component is subject to the RoHS directive and its applications within the Electrical and Electronic Equipment Act (ElektroG).

Art.Nr.	Zeichnungs Nr.	L1	L2
2) 3685718	226 215.0232.06	27.52	20.28
2) 3685678	226 215.0232.07	32.60	25.36
2) 3685765	226 215.0232.08	37.70	30.44
2) 3685679	226 215.0232.10	47.80	40.60
2) 3685680	226 215.0232.12	58.00	50.76
2) 3685681	226 215.0232.14	68.16	60.92
	226 215.0232.21	103.72	96.48

	Toleranzen tolerances		Oberfläche surface 1)		Maßstab/scale 1:2	
					Aluminium	
		Date	09.05.05	Abdeckhaube 6HE f.LP220mm Cover 6U f.PCB220mm		
		Name	Vishwa			
b	HT0120	27.05.13	Kör.	Prf.	Schaffer	1 Blätter sheets
a	R431	24.04.06	FroS	<b>HEITEC</b>		Blatt sheet
Rev.	Rev no.	Date	Name			1
						226 215.0232.06-21 MB b

CAD