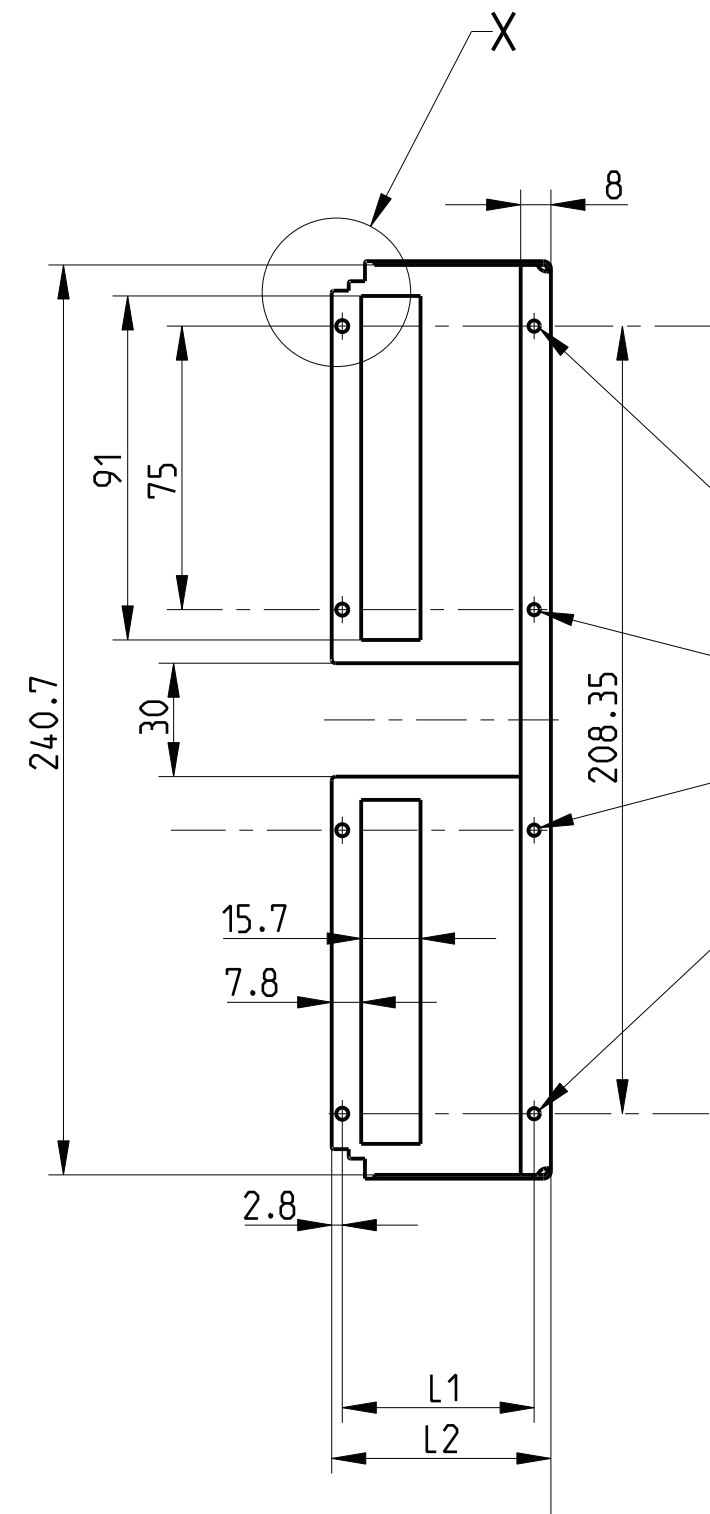
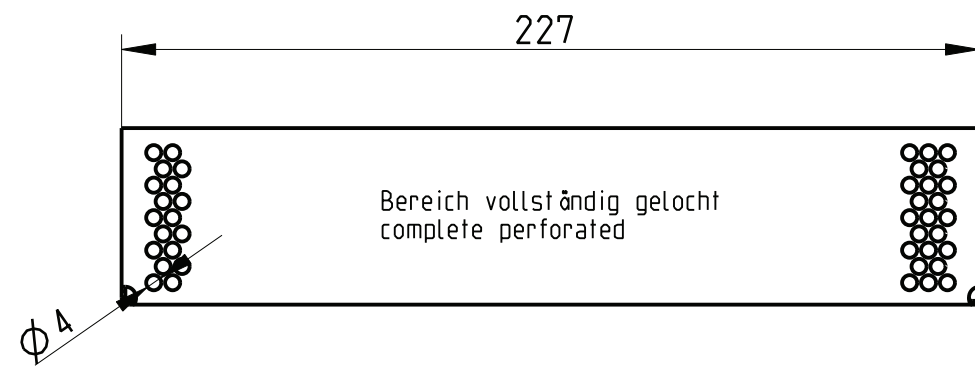
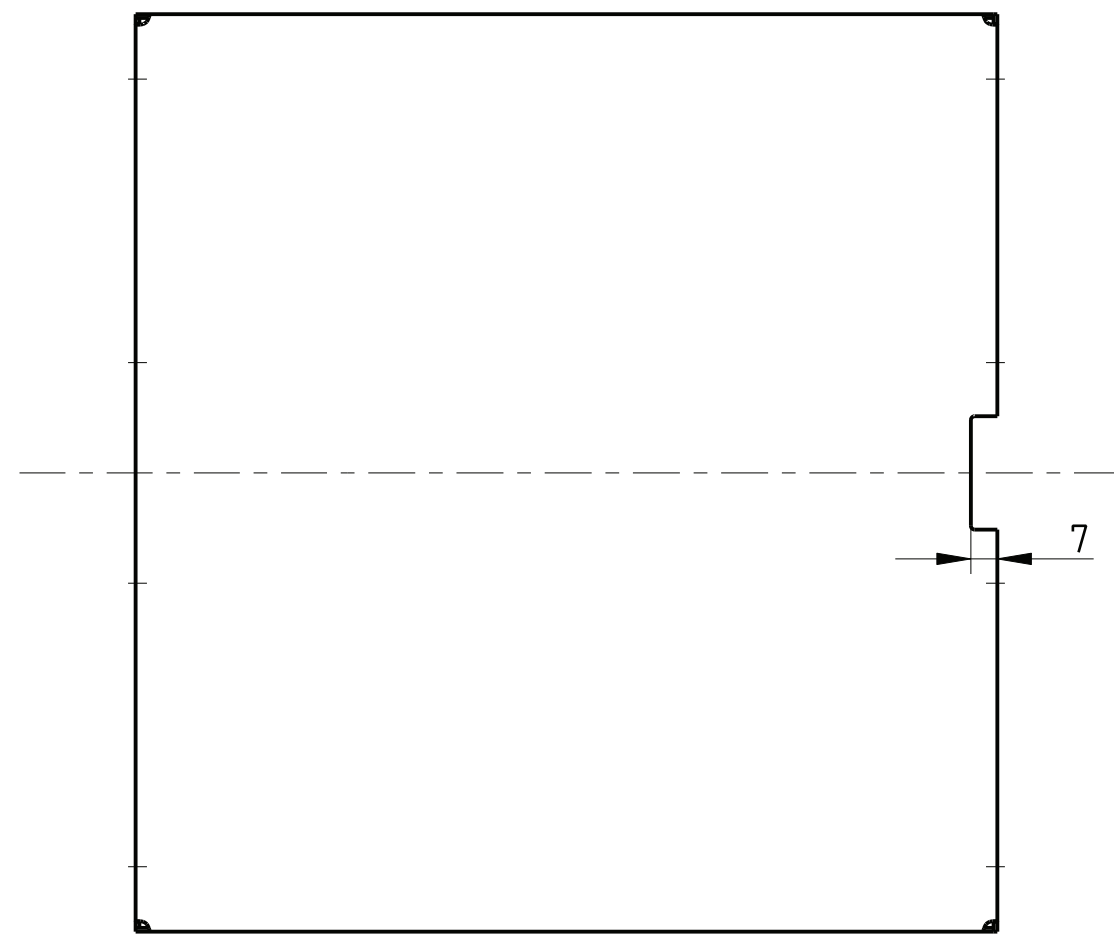
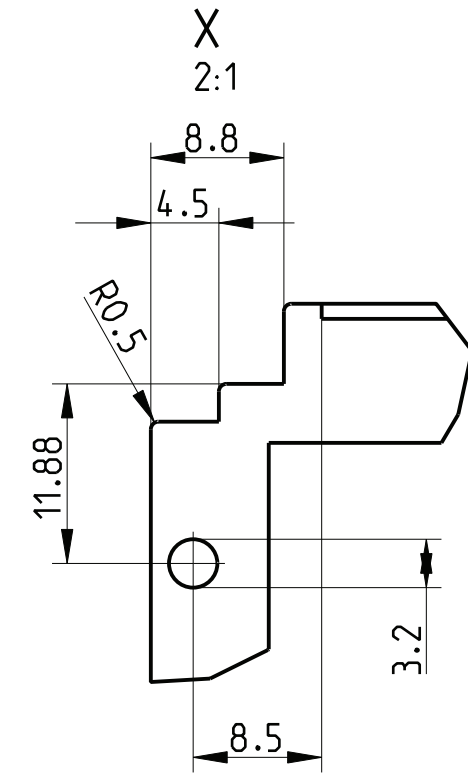


gezeichnete Ausführung Z.-Nr.12
 Drawn version dwg No 12



Einpreßmutter
 Insert nut M3



The reproduction, distribution and utilization of this document as well as the communication of its contents to others without explicit authorization is prohibited. All rights reserved in the event of a patent, utility model or design.

- 1) matt geätzt, farblos chromatiert
clear chromated
- 2) Standardprodukt: alle weiteren Typen auf Anfrage
Standard product: all other types on request
- 3) Technische Änderungen vorbehalten
Subject to change without notice
- 4) fuer 220 mm Leiterplattentiefe / Frontplattenbefestigung
for 220mm pcb depth /front plate fastening

Dieses Bauteil unterliegt den Reglementierungen der RoHS Richtlinie und deren Umsetzung im ElektroG.

This component is subject to the RoHS directive and its applications within the Electrical and Electronic Equipment Act (ElektroG).

Art.Nr.	Zeichnungs Nr.	L1	L2	L3	n
2) 3685714	226 215.0235.06	27.52	20.28	4.30	1
2) 3685670	226 215.0235.07	32.60	25.36	8.60	2
2) 3685716	226 215.0235.08	37.70	30.44	12.90	3
2) 3685671	226 215.0235.10	47.80	40.60	21.50	5
2) 3685672	226 215.0235.12	58.00	50.76	34.40	8
2) 3685673	226 215.0235.14	68.16	60.92	43.00	10
	226 215.0235.21	103.72	96.48	77.40	18

		Toleranzen tolerances		Oberfläche surface 1)		Maßstab/scale 1:2	
						Aluminium	
		Date	14.04.05	Abdeckhaube perf.6HE f.LP220mm		1	
		Name	Vishwa	Cover perforated 6U f.PCB220mm		Blätter sheets	
b	HT0120	27.05.13	Kör	Prf.	Schaffer	Typ: Steckblock	
a	R431	02.05.06	FroS			Type: box type plug-in-unit	
Rev.	Rev no.	Date	Name			226 215.0235.06-21 MB b	

CAD