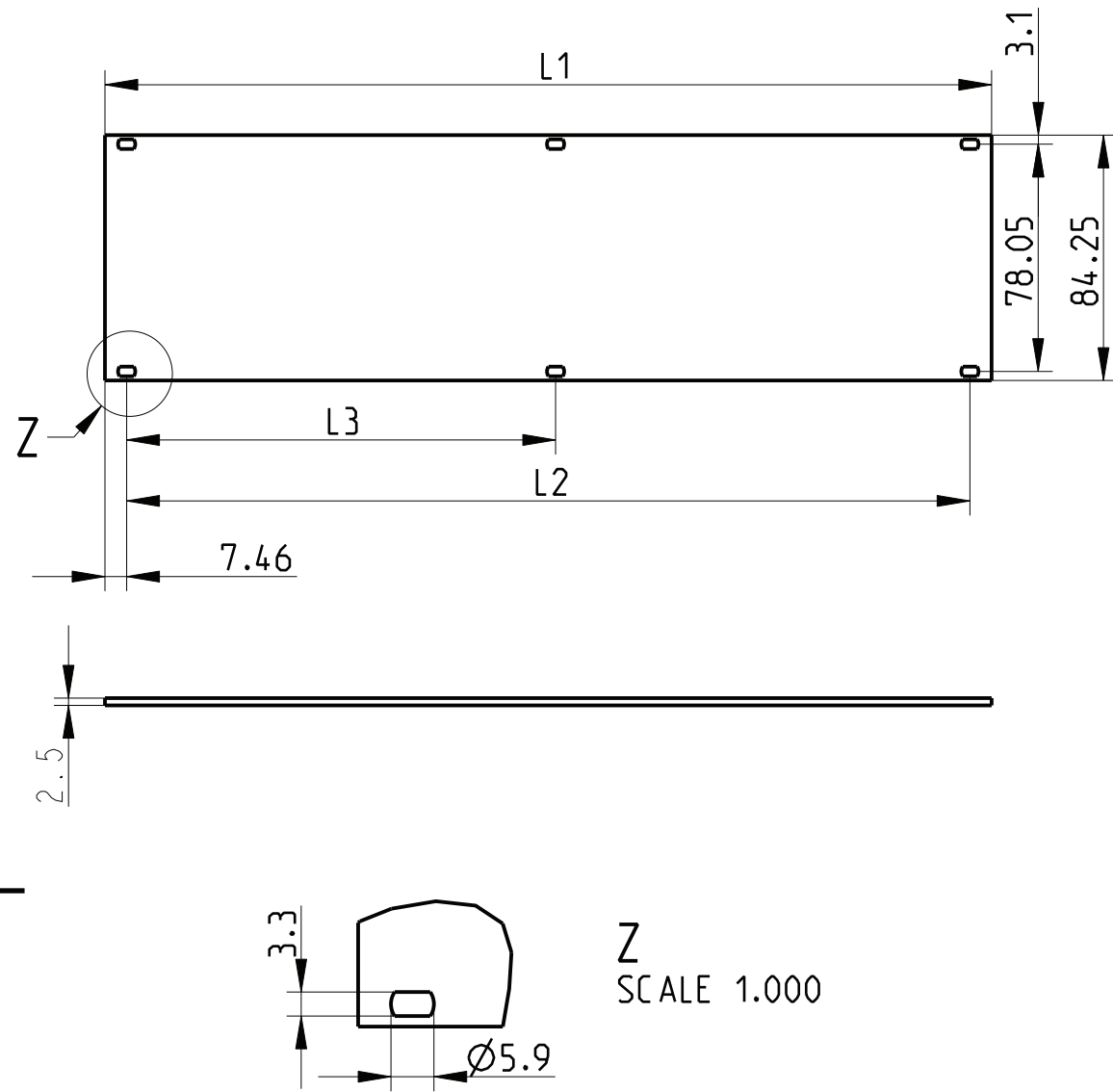


The reproduction, distribution and utilization of this document as well as the communication of its contents to others without explicit authorization is prohibited. Offenders will be held liable for the payment of damages. All rights reserved in the event of the grant of a patent, utility model or design.



Art.Nr.	Zeichnungs Nr.				Art.Nr.	Zeichnungs Nr.			
Part No.	Drawing No	L1	L2	L3	Part No.	Drawing No	L1	L2	L3
226	216.0135.02	9.84	---	---	226	216.0135.44	223.20	208.28	---
226	216.0135.03	14.92	---	---	226	216.0135.45	228.28	213.36	---
226	216.0135.04	20.00	---	---	226	216.0135.46	233.36	218.44	---
226	216.0135.05	25.08	---	---	226	216.0135.47	238.44	223.52	---
226	216.0135.06	30.16	---	---	226	216.0135.48	243.52	228.60	---
226	216.0135.07	35.24	---	---	226	216.0135.49	248.60	233.68	---
226	216.0135.08	40.32	---	---	226	216.0135.50	253.68	238.76	---
226	216.0135.09	45.40	---	---	226	216.0135.51	258.76	243.84	---
226	216.0135.10	50.48	35.56	---	226	216.0135.52	263.84	248.92	---
226	216.0135.11	55.56	40.64	---	226	216.0135.53	268.92	254.00	---
226	216.0135.12	60.64	45.72	---	226	216.0135.54	274.00	259.08	---
226	216.0135.13	65.72	50.80	---	226	216.0135.55	279.08	264.16	---
226	216.0135.14	70.80	55.88	---	226	216.0135.56	284.16	269.24	---
226	216.0135.15	75.88	60.96	---	226	216.0135.57	289.24	274.32	---
226	216.0135.16	80.96	66.04	---	226	216.0135.58	294.32	279.40	---
226	216.0135.17	86.04	71.12	---	226	216.0135.59	299.40	284.48	---
226	216.0135.18	91.12	76.20	---	226	216.0135.60	304.48	289.56	147.32
226	216.0135.19	96.20	81.28	---	226	216.0135.61	309.56	294.64	147.32
226	216.0135.20	101.28	86.36	---	226	216.0135.62	314.64	299.72	152.40
226	216.0135.21	106.36	91.44	---	226	216.0135.63	319.72	304.80	152.40
226	216.0135.22	111.44	96.52	---	226	216.0135.64	324.80	309.88	157.48
226	216.0135.23	116.52	101.60	---	226	216.0135.65	329.88	314.96	157.48
226	216.0135.24	121.60	106.68	---	226	216.0135.66	334.96	320.04	162.56
226	216.0135.25	126.68	111.76	---	226	216.0135.67	340.04	325.12	162.56
226	216.0135.26	131.76	116.84	---	226	216.0135.68	345.12	330.20	167.64
226	216.0135.27	136.84	121.92	---	226	216.0135.69	350.20	335.28	167.64
226	216.0135.28	141.92	127.00	---	226	216.0135.70	355.28	340.36	172.72
226	216.0135.29	147.00	132.08	---	226	216.0135.71	360.36	345.44	172.72
226	216.0135.30	152.08	137.16	---	226	216.0135.72	365.44	350.52	177.80
226	216.0135.31	157.16	142.24	---	226	216.0135.73	370.52	355.60	177.80
226	216.0135.32	162.24	147.32	---	226	216.0135.74	375.60	360.68	182.88
226	216.0135.33	167.32	152.40	---	226	216.0135.75	380.68	365.76	182.88
226	216.0135.34	172.40	157.48	---	226	216.0135.76	385.76	370.84	187.96
226	216.0135.35	177.48	162.56	---	226	216.0135.77	390.84	375.92	187.96
226	216.0135.36	182.56	167.64	---	226	216.0135.78	395.92	381.00	193.04
226	216.0135.37	187.64	172.72	---	226	216.0135.79	401.00	386.08	193.04
226	216.0135.38	192.72	177.80	---	226	216.0135.80	406.08	391.16	198.12
226	216.0135.39	197.80	182.88	---	226	216.0135.81	411.16	396.24	198.12
226	216.0135.40	202.88	187.96	---	226	216.0135.82	416.24	401.32	203.20
226	216.0135.41	207.96	193.04	---	226	216.0135.83	421.32	406.40	203.20
226	216.0135.42	213.04	198.12	---	226	216.0135.84	426.40	411.48	203.20
226	216.0135.43	218.12	203.20	---					

9904149

2) 3684887

2) 3684888

- 1) farblos eloxiert  
clear anodised
- 2) Standardprodukt: alle weiteren Typen auf Anfrage  
Standard product:  
all other types on request
- 3) Technische Aenderungen vorbehalten  
Subject to change without notice

Dieses Bauteil unterliegt den Reglementierungen der RoHS Richtlinie und deren Umsetzung im ElektroG.

This component is subject to the RoHS directive and its applications within the Electrical and Electronic Equipment Act (ElektroG).

	Toleranzen tolerances		Oberfläche surface 1)		Maßstab/scale 1:2.5; 1:1	
					Aluminium	
				Date	12.03.96	
				Name	Kon./Frö	
b	HT0120	27.05.13	Kör.	Prf.	Schaffer	
a	R269	27.04.05	Vish	<b>HEITEC</b>		
Rev.	Rev no.	Date	Name			
					Frontplatte 2HE flach Front panel 2U flat als Leerplatzabdeckung as filler panel	
					226 216.0135.02-84 MB b	
					1 Blätter sheets Blatt sheet 1	

CAD

Weitergabe sowie Vervielfältigung dieser Unterlagen, Verwertung und Mitteilung ihres Inhalts nicht gestattet, soweit nicht ausdrücklich zugelassen. Zuwiderhandlungen verpflichten zu Schadensersatz. Alle Rechte vorbehalten, insbesondere fuer den Fall der Patenterteilung oder Uff-Eintragung.