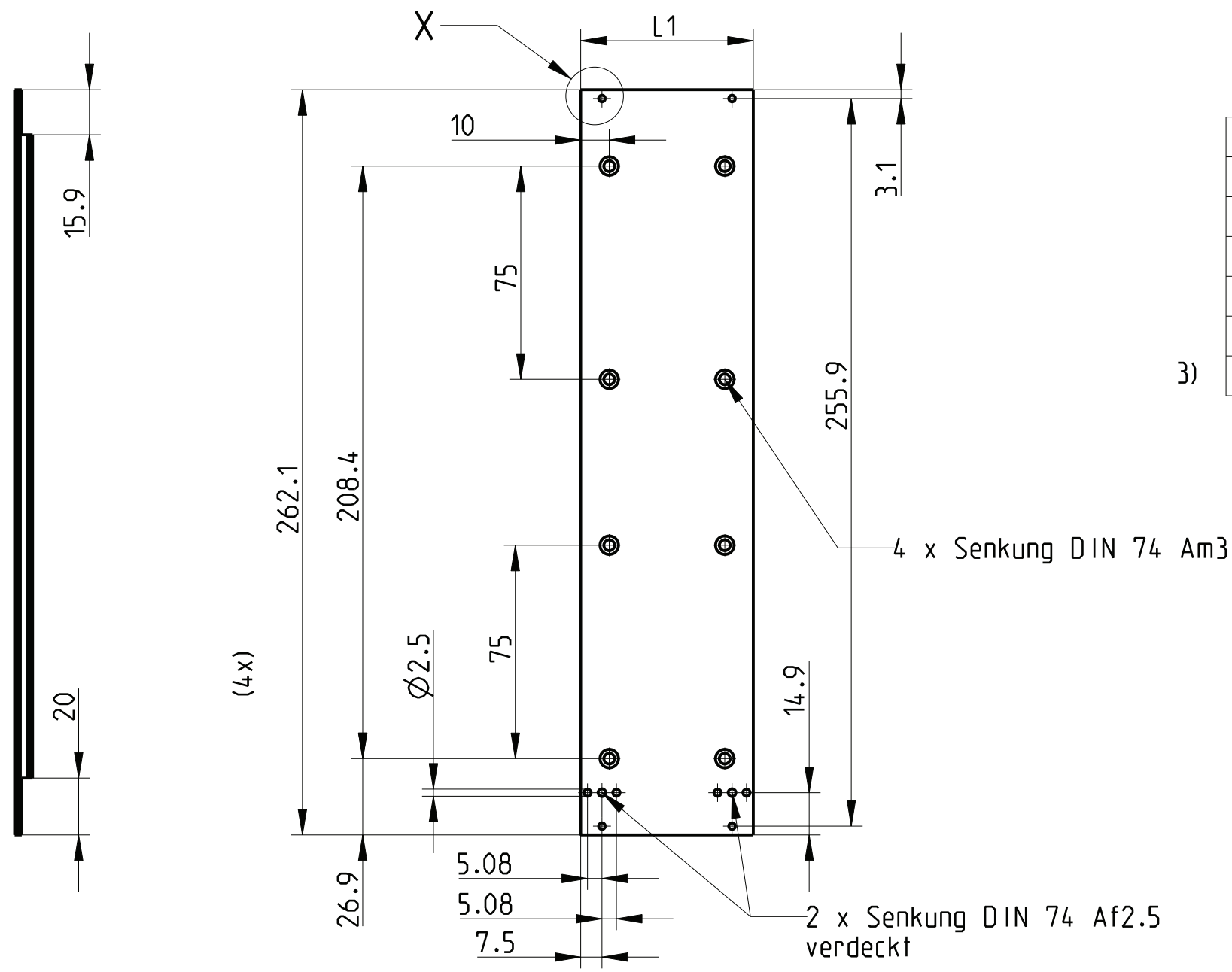
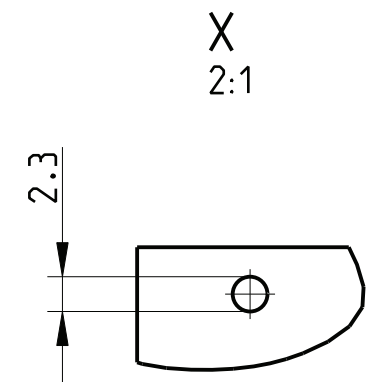


The reproduction, distribution and utilization of this document as well as the communication of its contents to others without explicit authorization is prohibited. Offenders will be held liable for the payment of damages. All rights reserved in the event of the grant of a patent, utility model or design.



Artikel Part No.	Breite/width TE / HP	L1
	8	40.3
	9	45.4
	10	50.5
	11	55.6
3) 3686.977	12	60.7



- 1) Frontsystem gemäß IEC 69297-3-101  
Front panel according IEC 69297-3-101
- 2) matt gebeizt, farblos chromatiert  
clear chromate
- 3) Standardprodukt: alle weiteren  
Typen auf Anfrage  
standard product:  
all other types on request
- 4) Technische Änderungen vorbehalten  
subject to change without notice

Dieses Bauteil unterliegt den Reglementierungen der RoHS Richtlinie und deren Umsetzung im ElektroG.

This component is subject to the RoHS directive and its applications within the Electrical and Electronic Equipment Act (ElektroG).

	Toleranzen tolerances		Oberfläche surface 2)		Maßstab/scale 1:2; 2:1	
					Aluminium Profil	
Rev.		Rev no.		Date 26.03.14		Frontplatte 6HE/EMV f. Griffleiste / Kassetten Face plate 6U / EMC f. handle / box plug in unit
				Name Kör.		
				Prf.		1 Blätter sheets
				<b>HEITEC</b>		Blatt sheet
						1
						J31815-V0092-M008_M016-A2-0027

CAD